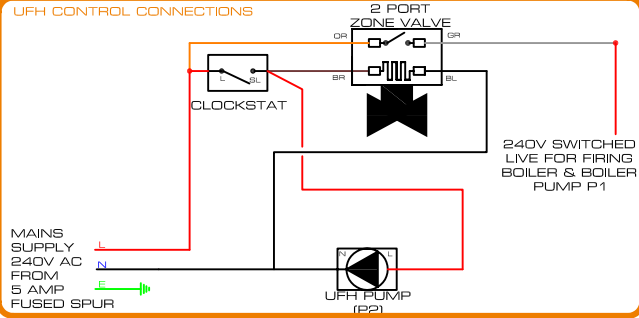
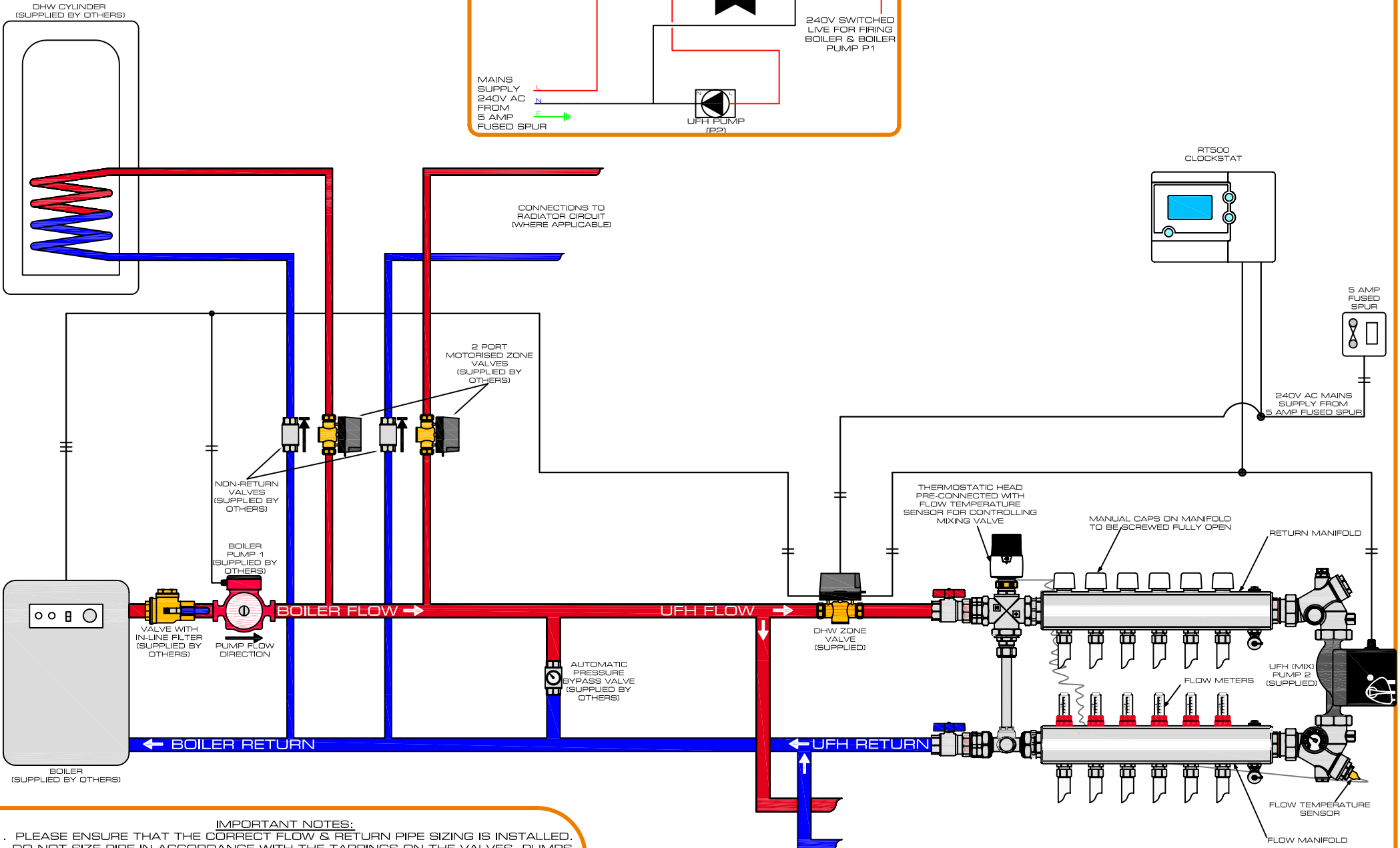


# STANDARD CONTROL - SINGLE ZONE DUALMIX SYSTEM OVERALL PLANT & WIRING LAYOUT



**IMPORTANT NOTE ON CABLING TO BE USED**  
ALL CABLES ARE SHOWN WITH THE NECESSARY LIVE (INCLUDING NEUTRAL) CORES, WITH THE EARTH CORE OMITTED. ALL THESE CABLES ARE TO BE MAINS RATED 1mm<sup>2</sup> CABLES. WE WOULD STRONGLY RECOMMEND USING A SINGLE CONTINUOUS CABLE FOR EACH CONNECTION, WHICH IS TO BE LABELLED UP AT EACH TERMINATION POINT. THIS ENSURES CORRECT CONNECTION OF ALL CABLES. AVOID SPLICING CABLES AND CORES ACROSS CABLES AS THIS CAN LEAD TO A DISFUNCTIONAL SYSTEM.

- ### IMPORTANT NOTES:
- PLEASE ENSURE THAT THE CORRECT FLOW & RETURN PIPE SIZING IS INSTALLED. DO NOT SIZE PIPE IN ACCORDANCE WITH THE TAPPINGS ON THE VALVES, PUMPS, ETC. ALL PIPES SHOULD BE SIZED IN ORDER TO COPE WITH THE LOADING OF THE SYSTEM. PLEASE CONTACT OUR OFFICE IF IN ANY DOUBT.
  - ALL NON-RETURN VALVES, 2-PORT MOTORISED VALVES ETC. CAN BE SUPPLIED. PLEASE CONTACT OUR OFFICE FOR FURTHER INFORMATION.

CONNECTIONS FOR SYSTEMS WITH MORE THAN ONE UFFH MANIFOLD (WHERE APPLICABLE)