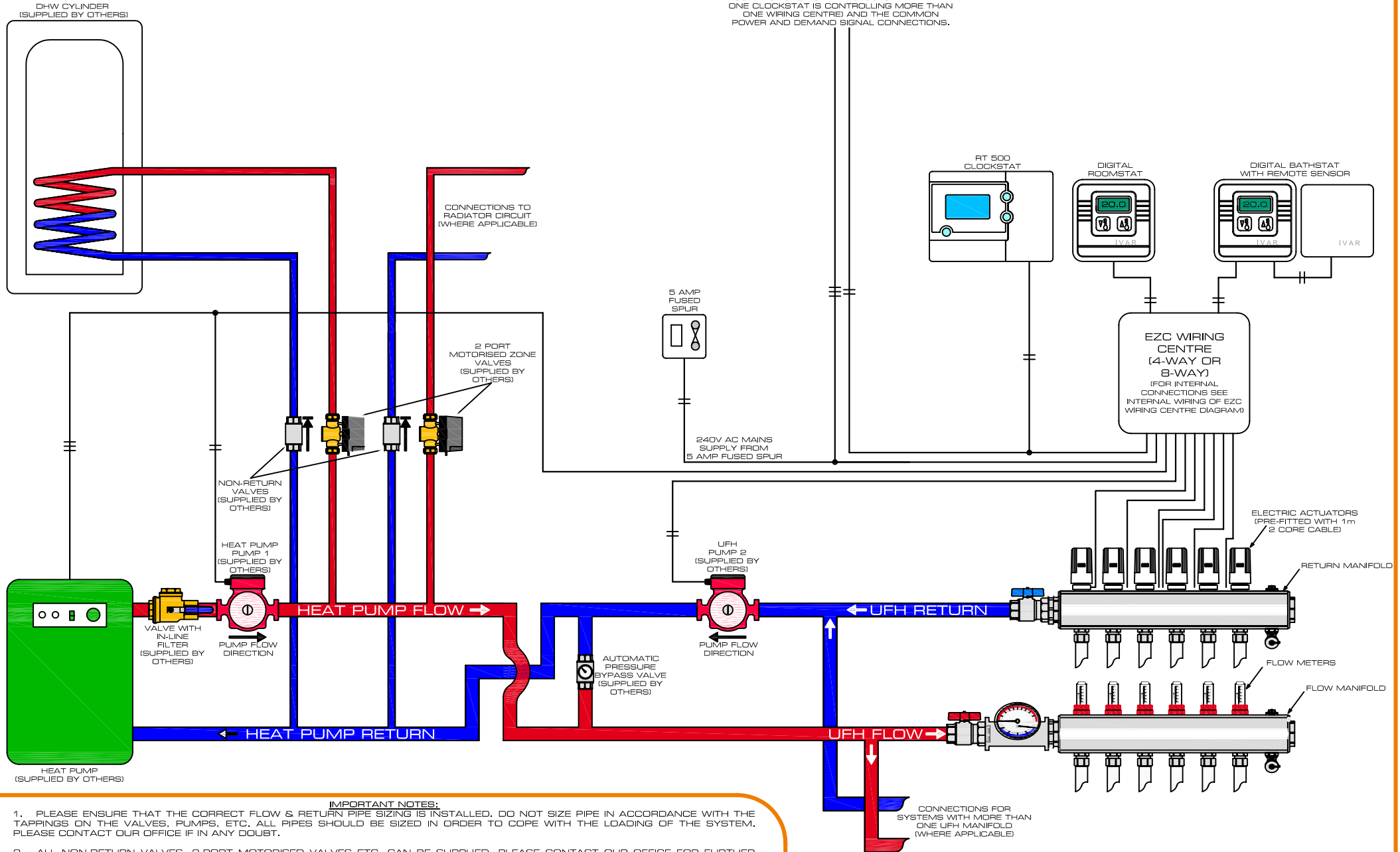


STANDARD CONTROL - HEAT PUMP SYSTEM OVERALL PLANT & WIRING LAYOUT



IMPORTANT NOTE ON CABLING TO BE USED
 ALL CABLES ARE SHOWN WITH THE NECESSARY LIVE (INCLUDING NEUTRAL) CORES, WITH THE EARTH CORE OMITTED. ALL THESE CABLES ARE TO BE MAINS RATED 1mm² CABLES. WE WOULD STRONGLY RECOMMEND USING A SINGLE CONTINUOUS CABLE FOR EACH CONNECTION, WHICH IS TO BE LABELLED UP AT EACH TERMINATION POINT. THIS ENSURES CORRECT CONNECTION OF ALL CABLES, AVOID SPLICING CABLES AND CORES ACROSS CABLES AS THIS CAN LEAD TO A DISFUNCTIONAL SYSTEM.

IF THERE ARE ANY OTHER WIRING CENTRES, THEY NEED TO BE INTERCONNECTED WITH A 2 CORE (& EARTH) AND A 3 CORE (& EARTH) CABLE. THESE ARE THE PARALLEL CONNECTIONS FOR THE CLOCKSTAT (WHERE ONE CLOCKSTAT IS CONTROLLING MORE THAN ONE WIRING CENTRE) AND THE COMMON POWER AND DEMAND SIGNAL CONNECTIONS.

IMPORTANT NOTES:

- PLEASE ENSURE THAT THE CORRECT FLOW & RETURN PIPE SIZING IS INSTALLED. DO NOT SIZE PIPE IN ACCORDANCE WITH THE TAPPINGS ON THE VALVES, PUMPS, ETC. ALL PIPES SHOULD BE SIZED IN ORDER TO COPE WITH THE LOADING OF THE SYSTEM. PLEASE CONTACT OUR OFFICE IF IN ANY DOUBT.
- ALL NON-RETURN VALVES, 2-PORT MOTORISED VALVES ETC. CAN BE SUPPLIED, PLEASE CONTACT OUR OFFICE FOR FURTHER INFORMATION.
- DEPENDING ON THE HEAT PUMP MANUFACTURER, THE HEAT PUMP MAY BE SUPPLIED WITH AN INTERNAL, PREFITTED PUMP (P1). HOWEVER THERE IS A STRONG POSSIBILITY THAT THIS PUMP MAY BE UNDERSIZED TO BE ABLE TO COPE WITH THE UNDERFLOOR HEATING REQUIREMENTS. IN THIS INSTANCE A CORRECTLY SIZED SECONDARY PUMP (P2) SHOULD BE FITTED AND WIRED AS SHOWN. (NOTE THAT THIS PUMP IS FITTED ON THE RETURN PIPEWORK FROM THE UNDERFLOOR HEATING PUMPING BACK TO THE HEAT PUMP)