

SALUS[®] | QUANTUM

CONTROLS

SQ610RF | SMART THERMOSTAT



SALUS SMART HOME
READY



WIRELESS
CONTROL



RECHARGEABLE
BATTERY



COMFORT
OF A WARM FLOOR



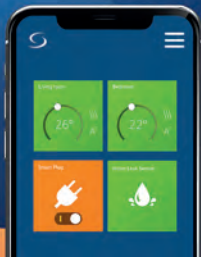
EASY
INSTALLATION



MULTIFUNCTIONALITY



HUMIDITY
SENSOR



Introduction

The **SQ610RF Quantum** is a ZigBee temperature controller for wireless control of iT600 series devices, such as the KL08RF wiring centre, mini TRV head, RX10RF boiler control module.

In order to control SQ610RF over the Internet or via the SALUS Smart Home mobile app (**ONLINE mode**), it must be installed together with the UGE600 Internet gateway (sold separately). From the application level, it is possible to pair SQ610RF with other system elements, e.g. Smart Plug SPE600, Smart Relay SR600 or window/door sensor OS600/SW600.

SQ610RF can be used locally without an Internet connection (**OFFLINE mode**), however, it's communication with other devices must be done using the C010RF coordinator (sold separately).

Full manual in PDF format is available at www.salus-controls.eu site.

Product Compliance

This product complies with the essential requirements and other relevant provisions of Directives 2014/30/ EU, 2014/35/EU, 2014/53/EU and 2011/65/EU. The full text of the EU Declaration of Conformity is available at the following internet address: www.saluslegal.com.



Safety Information

Use in accordance to national and EU regulations. Use the device as intended, keeping it in dry condition. Product for indoor use only. Installation must be carried out by a qualified person in accordance to national and EU regulations. Disconnect your equipment before cleaning it with a dry cloth.

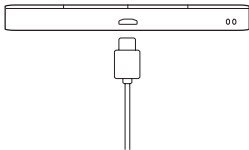
Package Content:

- 1) SQ610RF Quantum Thermostat
- 2) Wall mounting plate
- 3) Self-adhesive mounting tape
- 4) Mounting screws
- 5) Manual instruction

Before you start:

- 1 New SQ610RF Quantum Thermostat is partially charged, however, we recommend you to fully charge the battery before use.

Connect charger to micro-USB Port which is at the bottom of SQ610RF Quantum Thermostat to charge the device.



Charging to full battery level may take up to 24h maximum.

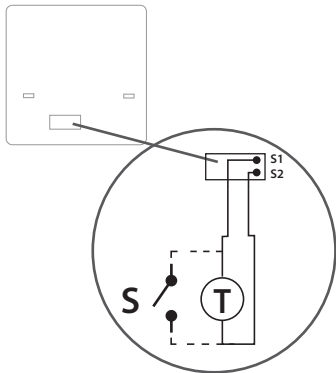
- 3 Mounting: to mount thermostat you can use included accessories (mounting screws or self-adhesive tape). Remove back cover to mount the plate to the wall. After this just attach thermostat to the plate (it has built-in magnet).



Please note:

The ideal position to thermostat mounting is about 1,5m under floor level far from heating or cooling sources. Thermostat can't be exposed to sunlight or any extreme conditions like for example draft.

2 Wiring diagram (S1, S2 Input)



Symbols explanation:

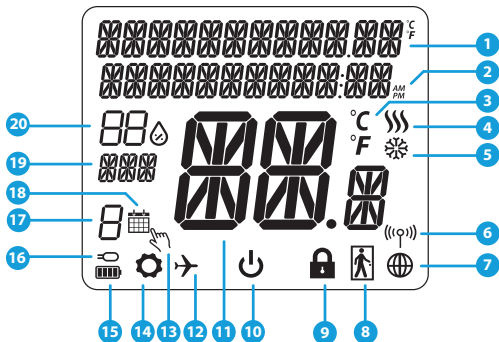
S – volt-free contact

T – temperature sensor






S1,S2 Terminals:

- air or floor temperature sensor
- external volt-free contact to connect any ON/OFF switch or occupancy sensor (Hotel card)

LCD Icon Description



- | | |
|---|--|
| 1. Menu/Settings description + Clock | 10. Standby mode icon |
| 2. AM/PM | 11. Current Temperature / Setpoint Temperature |
| 3. Temperature unit | 12. Holiday mode |
| 4. Heating indicator (icon is animating when there is heating demand) | 13. Temporary override mode |
| 5. Cooling indicator (icon is animating when there is cooling demand) | 14. Settings icon |
| 6. RF Connection indicator | 15. Battery status indicator |
| 7. Internet connection indicator | 16. External / Floor temp sensor indicator |
| 8. Occupancy sensor (hotel card) | 17. Schedule program number |
| 9. Key lock function | 18. Schedule mode icon |
| | 19. Day indicator/ SET information |
| | 20. Current Humidity value |

Buttons Description	
Button	Function
	<ol style="list-style-type: none"> 1) Menu button / Return button. 2) In the MAIN SCREEN: Press and hold for 3 sec to change the thermostat operating mode (Schedule mode / Permanent mode / Temporary override mode). 3) In the SETTINGS SCREEN: Press and hold for 3 sec to go back without saving the changes. 4) In the PAIRING SCREEN (in SYSTEM TYPE Menu): Press and hold for 3 sec to see other pairing options.
	„Down“ Button (Decrease parameter value/moving on the menu in 'DOWN' direction)
	“Up” Button (Increase parameter value/moving on the menu in 'UP' direction)
	<ol style="list-style-type: none"> 1) Press and hold for 3 seconds to POWER UP new device 2) “OK / Tick” Button (Confirm parameter value / Go to the next menu / Save settings) 3) In the MAIN SCREEN: Press and hold for 3 seconds to enter Standby mode 4) In the SETTINGS SCREEN: Press and hold for 3 sec to go back to the MAIN SCREEN & SAVE all the changes. 5) During PAIRING process – hold button for 3 seconds to POWER OFF or REBOOT the thermostat.
	In the MAIN SCREEN - press and hold these buttons together for 3 seconds to LOCK / UNLOCK the Thermostat keys).

COMPATIBILITY WITH OTHER SALUS CONTROLS DEVICES

Quantum Thermostat can work in **ONLINE** or **OFFLINE** mode.

At first step you need to decide in which mode your thermostat will work.

ONLINE MODE



Universal Gateway is CONNECTED TO THE INTERNET

You can configure and use all your devices in the Smart Home App

Download the Smart Home App on your iOS or Android device for remote access to your SALUS equipment.



SALUS
Smart Home



OFFLINE MODE



Universal Gateway is NOT CONNECTED TO THE INTERNET

You can use your devices locally without the SmartHome App. Gateway works in this mode as standard ZigBee coordinator.

OR



C010RF Coordinator - You can use standard ZigBee network coordinator to install and use your devices.

Compatible devices:



SR600*
Smart Relay



SPE600*
Smart Plug



KL08RF
Wiring Centre for 8-zone
underfloor heating (UFH).



TRV
(Thermostatic
Radiator Valve) with
wireless communication.



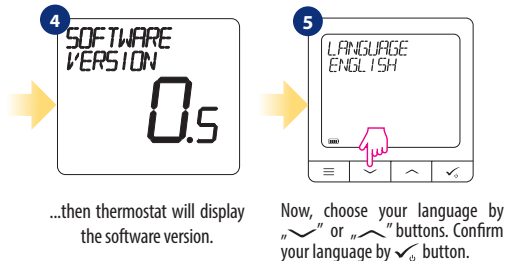
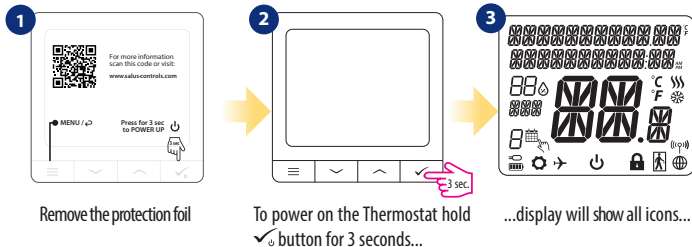
RX10RF
receiver

*Only with Online Mode

First power up sequence

Please note:

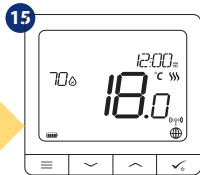
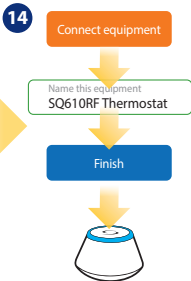
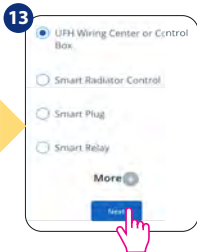
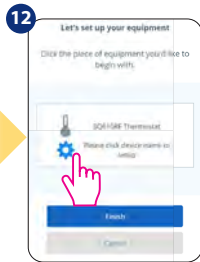
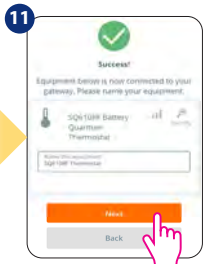
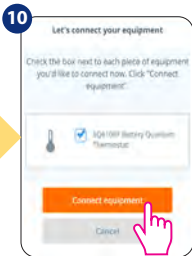
For easier installation, please make sure you have already added other devices to your ZigBee network, such as Underfloor Heating Control Box (KL08RF) or Radiator heads (TRV's) etc.



Installation in ONLINE mode

After Language selection follow below steps to add your device to the Smart Home app and pair with other devices:

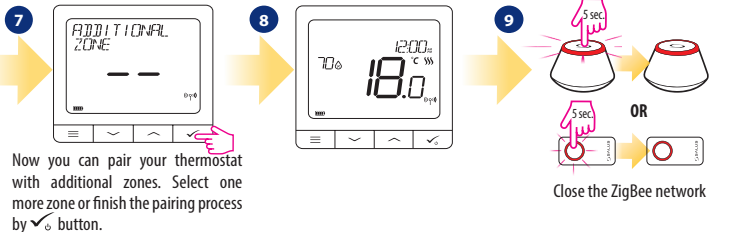
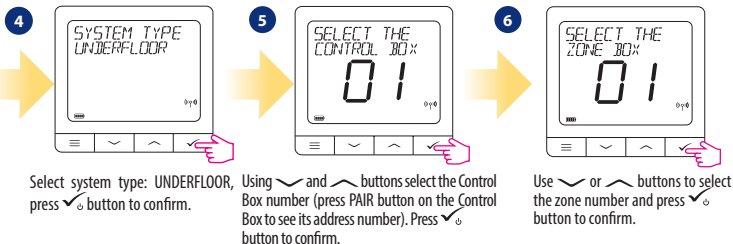




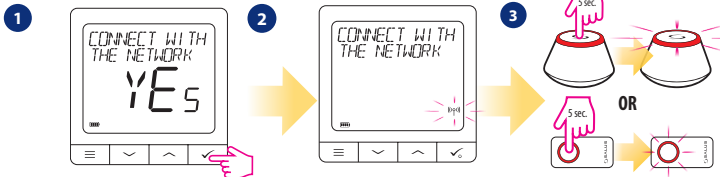
After that thermostat will display main screen.
Congratulations! You successfully configured SQ610RF Quantum Thermostat.

Installation in OFFLINE mode

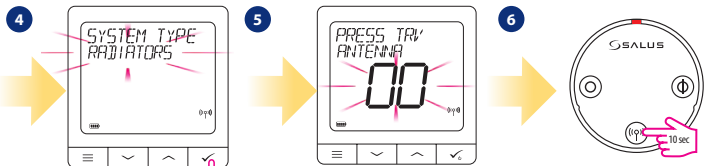
Pairing with Wiring Centre / Control Box (Install the Wiring Centre / Control Box according to the instructions included with product)



Pairing with TRV radiator head (Install the TRV according to the instructions included with product)



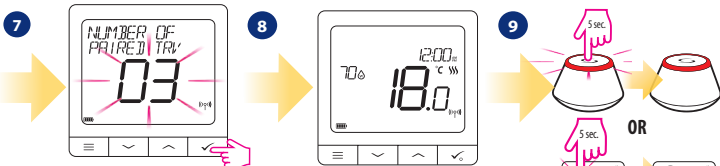
Open the ZigBee network

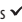


Select system type:
RADIATORS

Now hold antenna button for 10 sec. on all TRV's which you want to pair with your Thermostat.

You can pair up to 6 TRV's with 1 Thermostat. All TRV's have to within the same room with Thermostat.



On the LCD you will see the number of paired TRV's. Once all TRV's are paired - press  button to finish the pairing process.

Close the ZigBee network

SQ610RF Full menu structure

Main menu

Schedule settings

DISABLE
MO-FR+SA-SU
MO-SU
SINGLE DAYS

User settings

TIME/DATE
HOLIDAY MODE
THERMOSTAT CALIBRATION
SHOW/HIDE DISPLAY HUMIDITY
SHOW/HIDE DISPLAY FLOOR
STANDBY TEMP SETPOINT
HEAT/COOL
RESET USER SETTINGS

Admin settings

TEMPERATURE SCALE
DISPLAY TEMPERATURE RESOLUTION ¹.
HEAT CONTROL ALGORITHM ².
COOL CONTROL ALGORITHM
S1/S2 INPUT ³.
MINIMUM SETPOINT
MAXIMUM SETPOINT
VALVE PROTECTION ⁴.
MINIMUM TURN OFF TIME ⁵.
OPTIMISATION FEATURE ⁶.
COMFORT WARM FLOOR ⁷.
PIN CODE
DEVICE INFORMATION ⁸.
FACTORY RESET ⁹.

Language

ENGLISH
DANISH
POLISH
...

Short description of some selected functions (all functions are described in the full version of the SQ610RF manual):

- 1. DISPLAY TEMP RESOLUTION:** This function determines the resolution of the displayed temperature - User can temperature set by steps (every 0,5°C or 0,1°C).
- 2. CONTROL ALGORITHM:** This function defines how to control the room temperature. Available options are: ITLC for Underfloor Heating / Radiators / Electrical Heating (that's advanced algorithm for precise maintenance of room temperature), hysteresis +/-0.5°C or +/-0.25°C, THB Actuator (option recommended for systems with THB auto balancing actuators).
- 3. S1/S2 INPUT:** A floor sensor, an external temperature sensor or an occupancy sensor can be connected to the S1/S2 input of SQ610RF. Additionally, by connecting a NO type of ON/OFF voltage-free contact, you can use this input as a OneTouch rules trigger (programmed in the Salus Smart Home app) or as a Heat/Cool changeover.
- 4. VALVE PROTECTION:** This function activates all actuators once a week for 5 minutes (in summer, this function helps to prevent the actuators stuck).
- 5. MIN TURN OFF TIME:** Minimum switch-off time (thermostat will not send the signal for heating/cooling more often than specified in this parameter).
- 6. OPTIMISATION FEATURE:** Optimum Start and Optimum Stop functions are energy saving feature that makes thermostat most cost effective (in combination with ITLC control algorithm).
- 7. COMFORT WARM FLOOR:** This function helps to keep the floor warm, even if the room is warm enough and there is no need to turn on the heating. User can select 3 levels of warm floor feature. Please note it is not an economy feature, as your heating system may be ON even if there is no heating demand from the room thermostat. It is COMFORT feature which keeps your floor warm all the time.
- 8. DEVICE INFORMATION:** In this menu user can check: Software Version, Battery Level, RF range value, Paired devices or also user can activate Identification mode.
- 9. FACTORY RESET:** Here you can **RESET your device to factory settings. After successful reset device will be removed from ZigBee network and you will need to add / pair your device again.**



- ✓ **Ultra slim**
- ✓ **Precise temperature control** (underfloor heating, radiator heating, electrical heating)
- ✓ **Works with:** *Amazon Alexa* and *Google Home*
- ✓ **Rechargeable through micro USB**



Universal Gateway

Connect it with *Universal Gateway* and setup your own SALUS Smart Home system



Smart Radiator Control

Pair it with *Quantum* to achieve the perfect temperature everywhere, not only beside the radiator



Smart Relay

Connect it with *Universal Gateway* and control wirelessly pumps, valves, boilers, lighting etc

